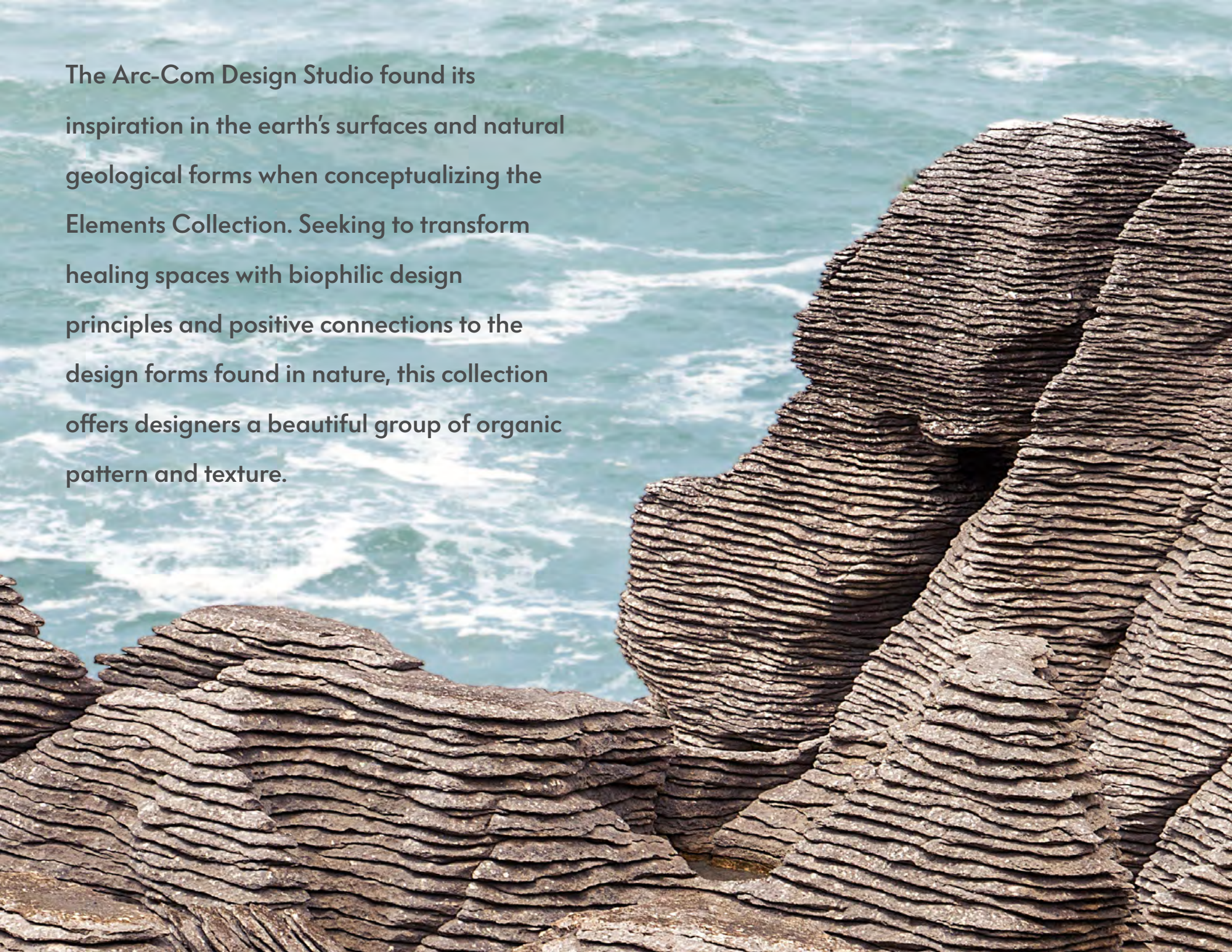




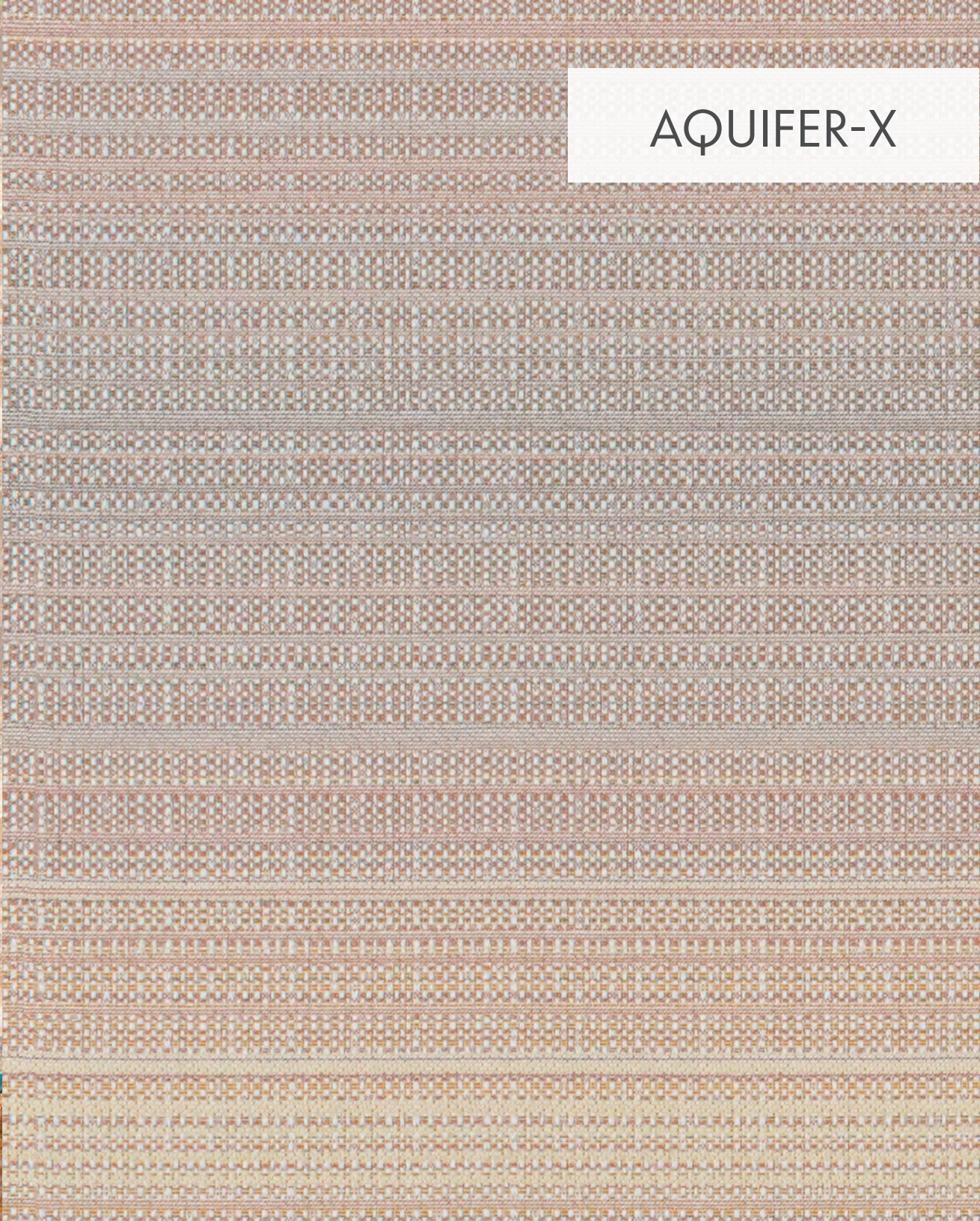
INTRODUCING  
**THE ELEMENTS  
COLLECTION**

The Arc-Com Design Studio found its inspiration in the earth's surfaces and natural geological forms when conceptualizing the Elements Collection. Seeking to transform healing spaces with biophilic design principles and positive connections to the design forms found in nature, this collection offers designers a beautiful group of organic pattern and texture.





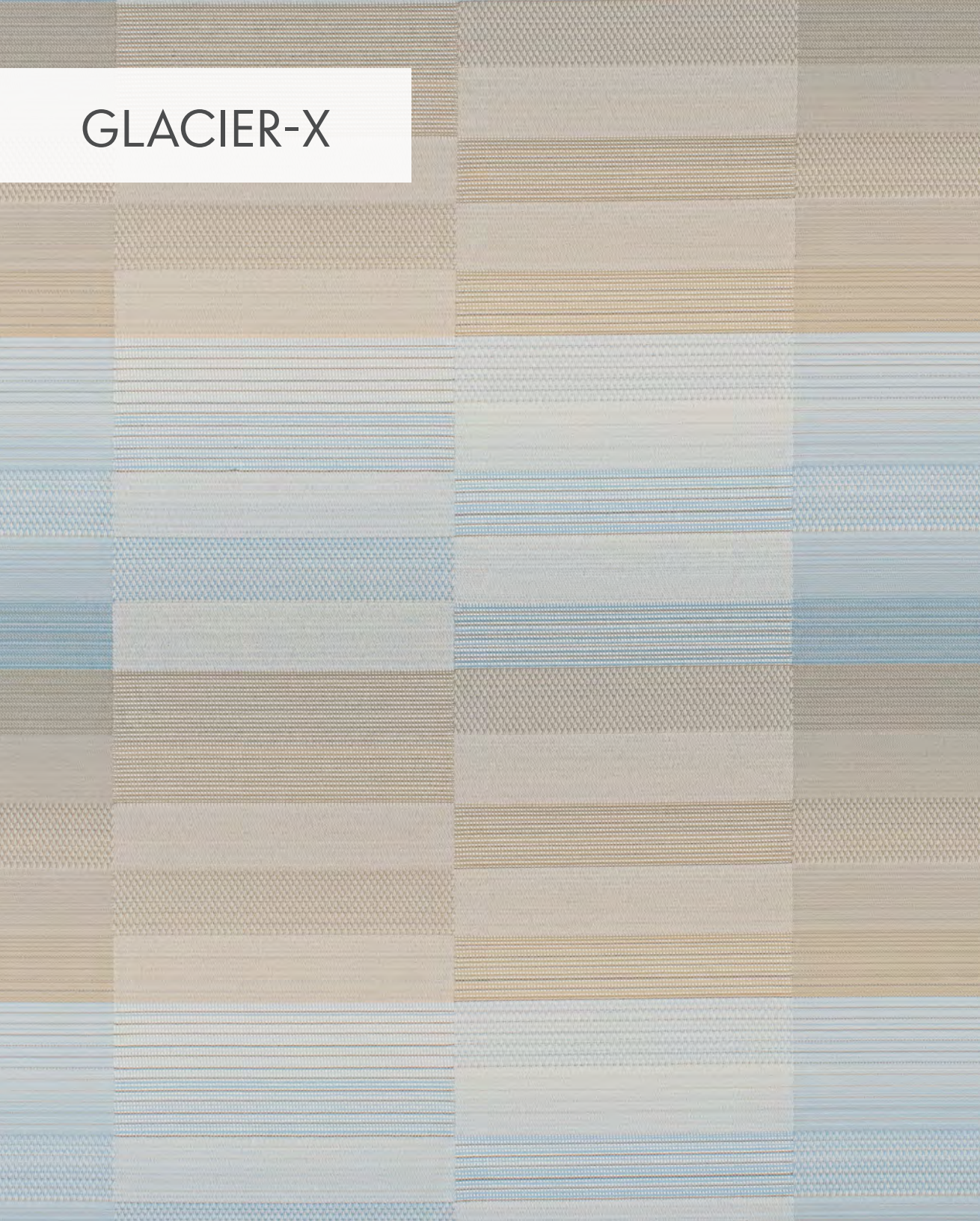
AQUIFER-X



AQUIFER-X



# GLACIER-X

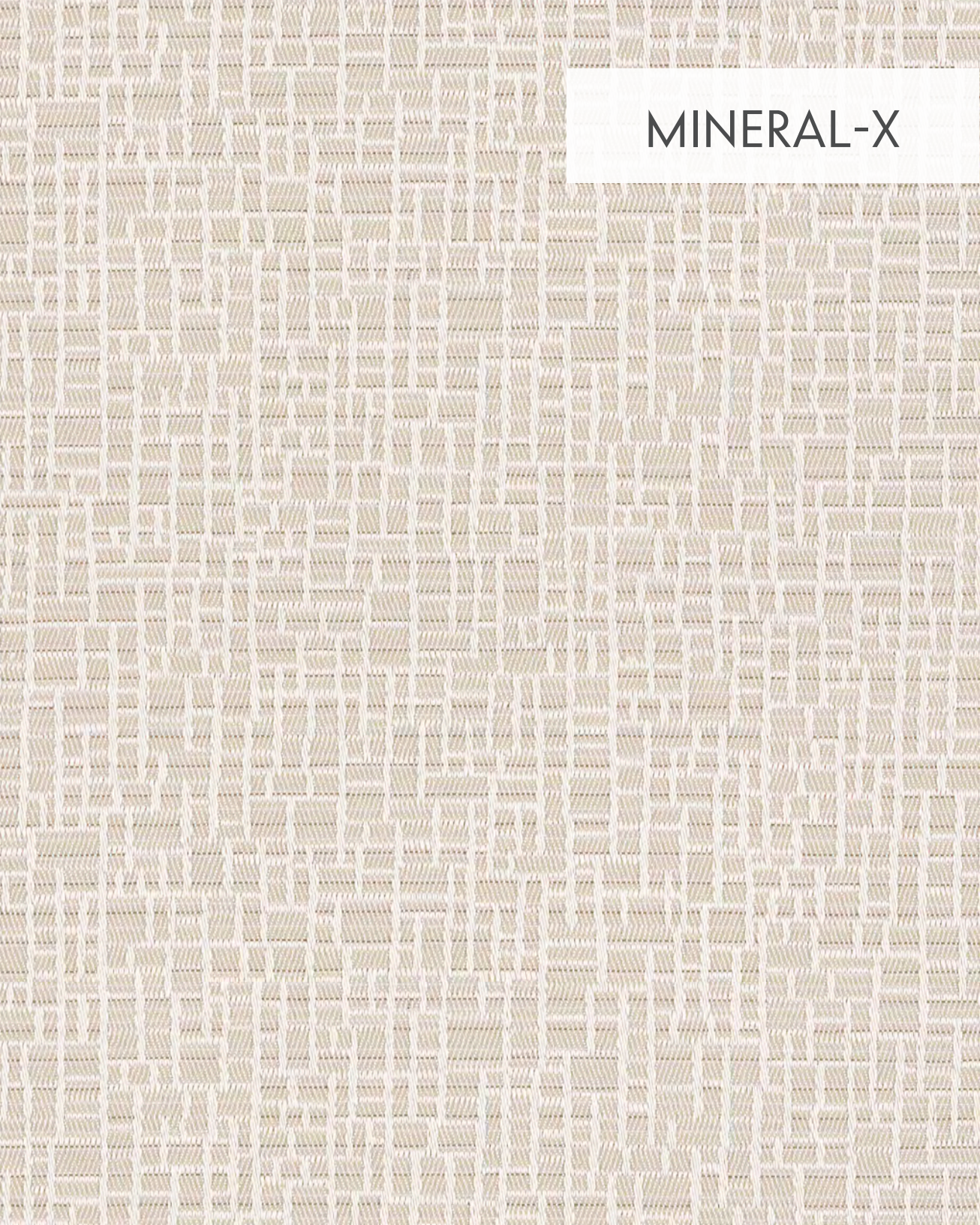


# GLACIER-X





MINERAL-X



MINERAL-X





## AQUIFER-X

|               |  |
|---------------|--|
| Content       | 56% Polyester,<br>41% FR PCR Polyester,<br>3% X-STATIC® Silver Antimicrobial Fiber |
| Environmental | Recycled Fiber Content<br>This fabric can contribute to LEED certification         |
| Application   | Privacy Curtains, Drapery  |
| Colorways     | 6  |
| Price         | US\$49.25  |
| 100 yds +     | US\$44.95  |
| Samples       | <a href="http://arc-com.com/aquifer_x">arc-com.com/aquifer_x</a>                   |





## GLACIER-X

|               |  |
|---------------|--|
| Content       | 57% Polyester,<br>40% FR PCR Polyester,<br>3% X-STATIC® Silver Antimicrobial Fiber |
| Environmental | Recycled Fiber Content<br>This fabric can contribute to LEED certification         |
| Application   | Privacy Curtains, Drapery  |
| Colorways     | 4  |
| Price         | US\$49.95  |
| 100 yds +     | US\$45.95  |
| Samples       | <a href="http://arc-com.com/glacier_x">arc-com.com/glacier_x</a>                   |

## MINERAL-X

|               |  |
|---------------|--|
| Content       | 57% Polyester,<br>40% FR PCR Polyester,<br>3% X-STATIC® Silver Antimicrobial Fiber |
| Environmental | Recycled Fiber Content<br>This fabric can contribute to LEED certification         |
| Application   | Privacy Curtains, Drapery  |
| Colorways     | 7  |
| Price         | US\$49.25  |
| 100 yds +     | US\$44.95  |
| Samples       | <a href="http://arc-com.com/mineral_x">arc-com.com/mineral_x</a>                   |