



TECHNICAL INFORMATION

54" Pattern	Repeat	Fiber Content & Finish	Abrasion (Wyzenbeek*)	Lightfastness (AATCC Method 16)	Cleaning Code
AXIS©	V-none H-none	100% Vinyl Face, 100% Polyester Back (u)phoria!™, MorCare™	Exceeds 300,000 D.R.	Exceeds 200 hours	WS/BC
BLOCK PETAL©	V-18 1/2" H-18 1/2"	100% Polyurethane Face, 100% Polyester Back Stain Resistant Finish	Exceeds 300,000 D.R.	Exceeds 200 hours	WS/BC
CHANNEL	V-none H-none	100% Polyurethane Face, 100% Polyester Back WriteOut®	Exceeds 300,000 D.R.	Exceeds 200 hours	WS/BC
CHROMA	V-none H-none	90% Vinyl, 10% Urethane Face, 100% Polyester Hi-Loft™ Back SILVERGUARD®, PERMABLOK®	Exceeds 300,000 D.R.	Exceeds 120 hours	WS/BC
COSMOS©	V-18" H-18"	100% Vinyl Face, 100% Polyester Hi-Loft™ Back SILVERGUARD®, PBG+, PERMABLOK®, PERMAGUARD®	Exceeds 300,000 D.R.	Exceeds 200 hours	WS/BC
DYNASTY	V-none H-none	100% Polyurethane Face, 100% Polyester Back AEGIS, Stain Resistant Finish	Exceeds 300,000 D.R.	Exceeds 120 hours	WS/BC
INTAGLIO	V-none H-none	100% Polyurethane Face, 100% Polyester Knit Back AEGIS, Stain Resistant Finish	Exceeds 500,000 D.R.	Exceeds 150 hours	WS/BC
INTAGLIO 2	V-none H-none	100% Polyurethane Face, 100% Polyester Knit Back AEGIS, Stain Resistant Finish	Exceeds 500,000 D.R.	Exceeds 150 hours	WS/BC
MARQUEE©	V-6 3/4" H-5 1/4"	100% Vinyl Face, 100% Polyester Hi-Loft™ Back SILVERGUARD®, Stain Resistant Finish	Exceeds 300,000 D.R.	Exceeds 150 hours	WS/BC
MASON©	V-8 1/4" H-8 1/4"	100% Vinyl Face, 100% Polyester Hi-Loft™ Back SILVERGUARD®, Stain Resistant Finish	Exceeds 300,000 D.R.	Exceeds 150 hours	WS/BC
MOON BEAM	V-none H-none	61% Polyester, 27% Cotton, 11% Rayon, 1% Nylon CRYPTON®	Exceeds 150,000 D.R.	Exceeds 40 hours	WS
MOON BEAM 2	V-none H-none	61% Polyester, 27% Cotton, 11% Rayon, 1% Nylon CRYPTON®	Exceeds 150,000 D.R.	Exceeds 40 hours	WS
PALATINE	V-none H-none	65% Polyester, 35% Rayon CRYPTON®	Exceeds 150,000 D.R.	Exceeds 40 hours	WS
PALATINE 2	V-none H-none	65% Polyester, 35% Rayon CRYPTON®	Exceeds 150,000 D.R.	Exceeds 40 hours	WS
POLISHED	V-none H-none	100% Polyurethane Face, 100% Polyester Back AEGIS, Stain Resistant Finish	Exceeds 300,000 D.R.	Exceeds 120 hours	WS/BC
ROGUE	V-none H-none	48% Polyester, 33% Post Industrial Recycled Polyester, 19% Post Consumer Recycled Polyester CRYPTON® green	Exceeds 150,000 D.R.	Exceeds 40 hours	WS/BC
SANTORINI	V-none H-none	100% Silicone Face, 100% Polyester Back SiPro™	Exceeds 200,000 D.R.	Exceeds 1,000 hours	WS/BC
SEA WILLOW©	V-20" H-27"	100% Vinyl Face, 100% Polyester Hi-Loft™ Back SILVERGUARD®, Stain Resistant Finish	Exceeds 300,000 D.R.	Exceeds 200 hours	WS/BC
SILVERADO	V-none H-none	100% Vinyl Face, 100% Polyester Hi-Loft™ Back PERMABLOK®	Exceeds 390,000 D.R.	Exceeds 200 hours	WS/BC
SILVERADO 2	V-none H-none	100% Vinyl Face, 100% Polyester Hi-Loft™ Back PERMABLOK®	Exceeds 390,000 D.R.	Exceeds 200 hours	WS/BC
SPIN©	V-10 3/4" H-10 3/4"	100% Vinyl Face, 100% Polyester Hi-Loft™ Back SILVERGUARD®, Stain Resistant Finish	Exceeds 300,000 D.R.	Exceeds 150 hours	WS/BC
SQUARE ONE©	V-14" H-14"	77% Post Consumer Recycled Polyester, 23% Nylon CRYPTON® green	Exceeds 145,000 D.R.	Exceeds 40 hours	WS/BC
VELOCITY©	V-20" H-18"	100% Vinyl Face, 100% Polyester Hi-Loft™ Back SILVERGUARD®, Stain Resistant Finish	Exceeds 300,000 D.R.	Exceeds 150 hours	WS/BC

Cleaning Codes:
 WS - Water based cleaning agents and foam may be used.
 BC - May be cleaned with bleach following the proper ratio of water and bleach.
 Cleaning by a professional service is recommended.

See Arc-Com Textile samples for specific technical data.
 *Multiple factors affect fabric durability and appearance retention, including end-user application and proper maintenance.
 Wyzenbeek results above 100,000 double rubs have not been shown to be an indicator of increased lifespan.



kwalu.

www.kwalu.com
 877-MY-KWALU

©2017 Kwalu

This card represents only a select sampling of the Arc-Com fabrics available.

For the complete selection of patterns and colorways and/or samples of our specific fabrics visit our website at www.arc-com.com or contact Arc-Com.

Arc Com

(800) 223-5466
arc-com.com

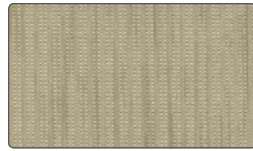
Arc Com Alliance



Block Petal
AC-62582 Stone #3



Rogue
AC-62542 Pebble #3



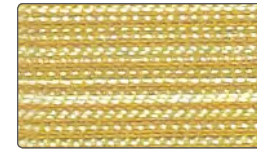
Channel
AC-61626 Lemon Grass #7



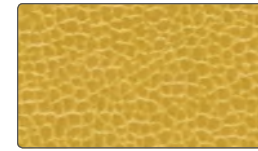
Silverado
AC-67667 Nickel #18



Palatine
AC-68457 Seafoam #8



Moon Beam 2
AC-60595 Citron #38



Santorini
AC-62885 Citron #6



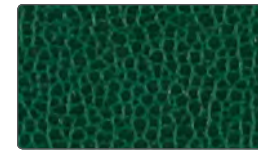
Dynasty
AC-60510 Kiwi #11



Palatine 2
AC-61224 Grass #31



Silverado
AC-67660 Emerald #11



Santorini
AC-62881 Emerald #2



Spin
AC-61763 Truffle #4



Rogue
AC-62541 Fog #2



Polished
AC-60759 Fog #20



Intaglio
AC-69416 Rainstorm #17



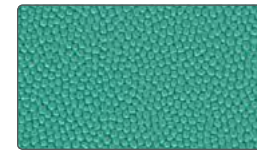
Mason
AC-61806 Smoke #7



Marquee
AC-62036 Butterscotch #7



Sea Willow
AC-62359 Blueberry #10



Chroma
AC-60147 Jade #18



Silverado 2
AC-62721 Pool #32



Moon Beam 2
AC-60598 Baltic #41



Intaglio 2
AC-61427 Federal #38



Square One
AC-62291 Cocoa #2



Chroma
AC-60138 Ginger #9



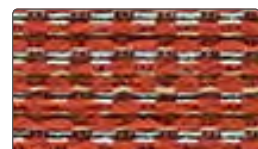
Axis
AC-61344 Honey #5



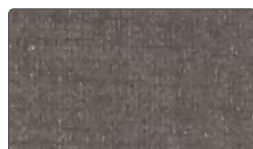
Moon Beam
AC-68625 Persimmon #6



Velocity
AC-61995 Chestnut #16



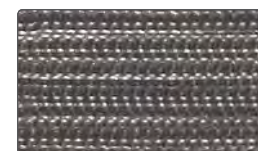
Palatine 2
AC-61218 Terracotta #25



Dynasty
AC-60531 Bark #32



Axis
AC-61352 Ocean #13



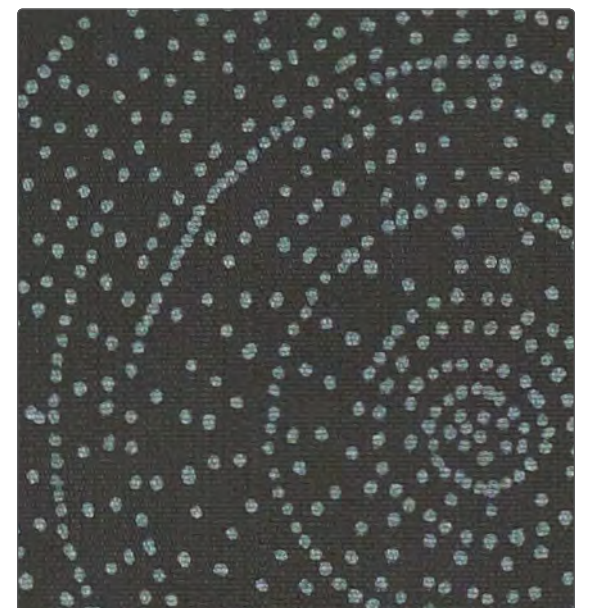
Moon Beam 2
AC-60600 Ash #43



Santorini
AC-62893 Sapphire #14



Palatine
AC-68465 Graphite #16



Cosmos
AC-62310 Charcoal #1