



INTRODUCING
ENFORCE
PVC-FREE WALL PROTECTION

Arc|Com

Ease of Application:

- Flexible wall protection- NOT rigid panels.
- Shipped in 30 yard rolls.
- No need for corner guards, top caps, or trim strips.
- Flexible to turn both inside and outside corners easily with heat tool.
- High-performance heavyweight drill woven fabric backing.
- 54" Width.

Superior Performance:

- Employs evo[®] PVC-Free technology.
- Class A Flame and Smoke performance.
- Impact, abrasion and scratch resistant.
- Superior stain and chemical resistance.
- Bleach cleanable.
- Disinfectant safe.



ENFORCE

Environmental Attributes:

- PVC-Free Olefin Composite.
- 33 oz. heavyweight material.
- Printed with water-based inks.
- PFAS, PFOA, and PFDE free.
- Proposition 65 compliant.
- LBC Red List free.
- Meets Healthier Hospitals Guidance (HHI).
- 30% post-industrial recycled content.
- Phthalate free | Heavy metal free.
- Flame retardant additive free.
- Antimicrobial free.
- Formaldehyde free.
- Supports LEED[®] v4.1 Criteria.

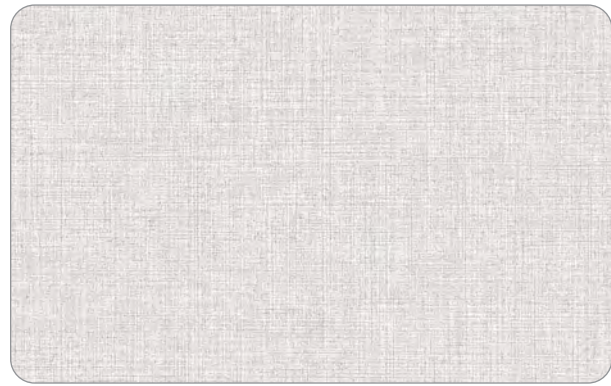
Decorative Protection:

- Beauty, quality, performance and durability that will enhance any interior environment.
- Easy to install, clean and maintain.
- A portion of the proceeds from sales of Enforce PVC-Free Wall Protection will support the National Forest Foundation (NFF). One tree will be planted for every roll sold.

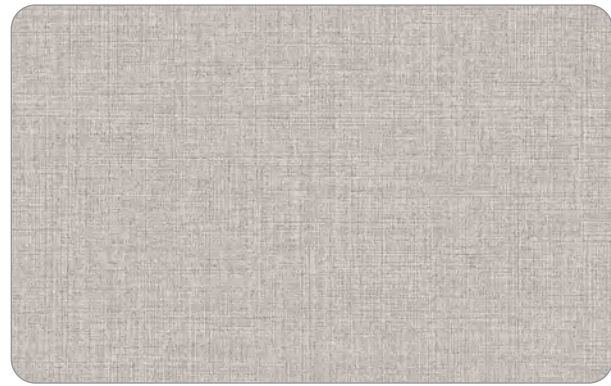
ALCAZAR

Design Versatility: Alcazar provides a crisp, tailored woven linen texture for limitless applications across every interior environment.

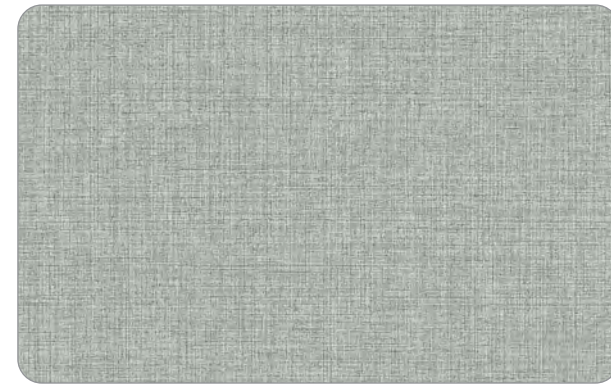




ACE-53721 Glint #1



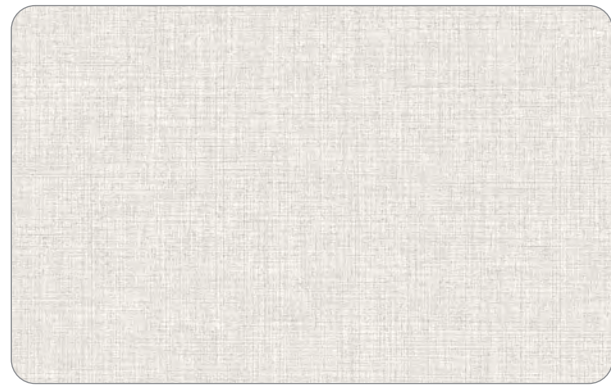
ACE-53722 Vela #2



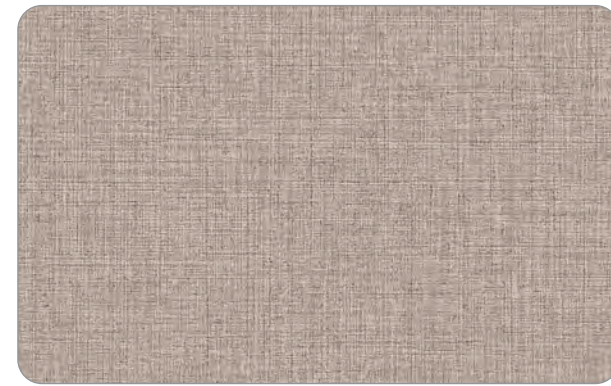
ACE-53723 Iona #3



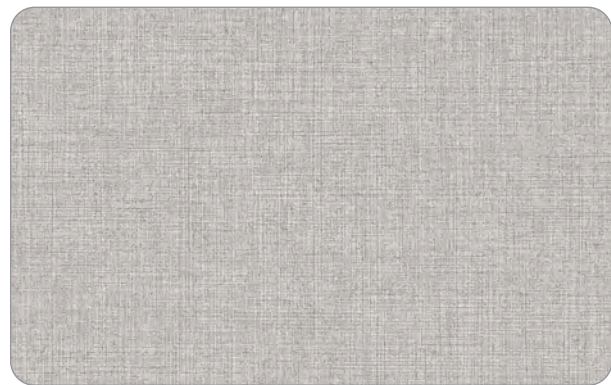
ACE-53724 Mira #4



ACE-53725 Arc #5



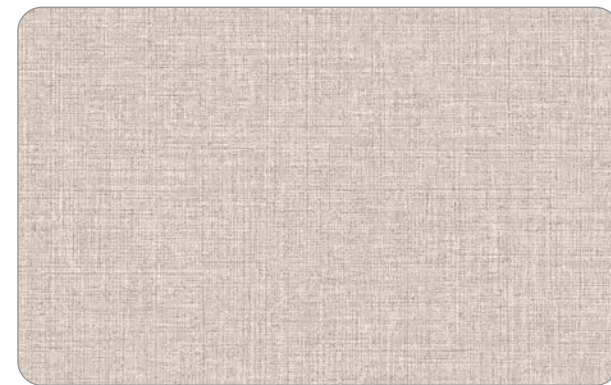
ACE-53726 Tankard #6



ACE-53727 Palladium #7



ACE-53728 Tawny #8



ACE-53729 Prestige #9



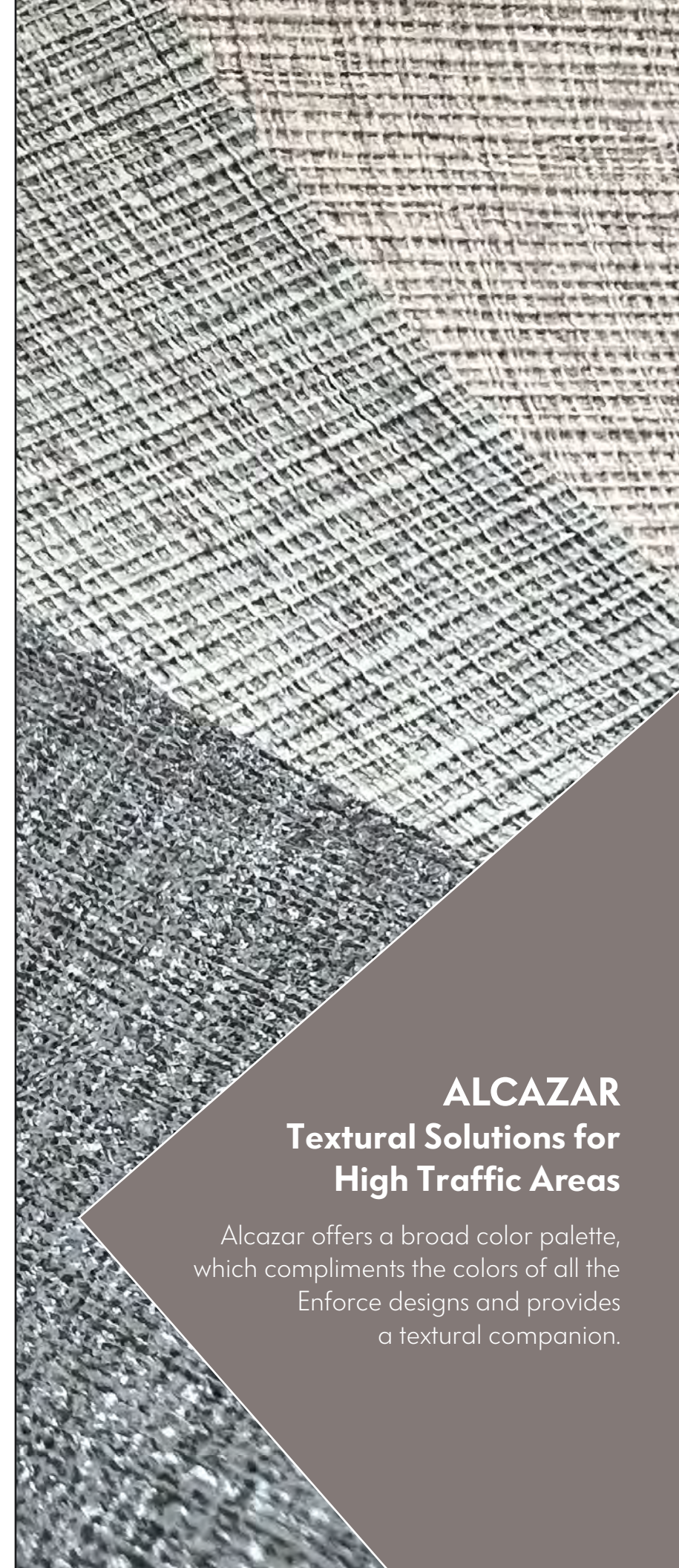
ACE-53730 Forge #10



ACE-53731 Tungsten #11



ACE-53732 Dusk #12



ALCAZAR Textural Solutions for High Traffic Areas

Alcazar offers a broad color palette, which compliments the colors of all the Enforce designs and provides a textural companion.



Surface Durability

Tough and beautiful. A winning combination for public spaces, corridors and elevator lobbies.

Shown: Top: Alcazar / Bottom: Gibraltar

ANKARA

Ankara fuses the textural beauty of a raw silk with the durability of wall protection performance.





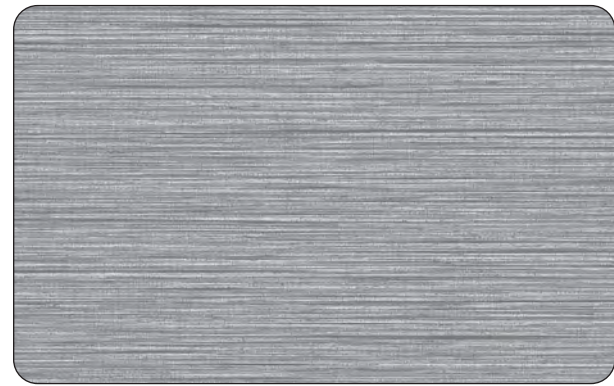
ACE-53761 Virtuoso #1



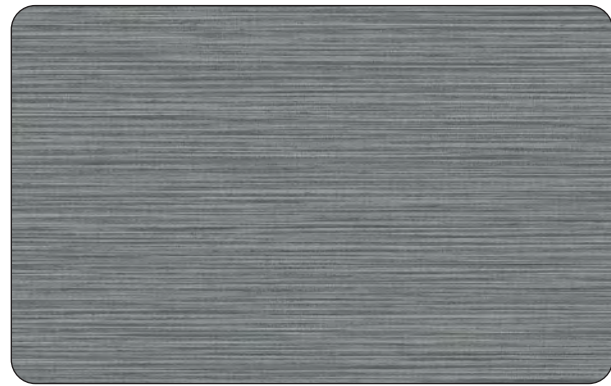
ACE-53762 Mystique #2



ACE-53763 Astral #3



ACE-53764 Moondust #4



ACE-53765 Cove #5



ACE-53766 Sparrow #6



ACE-53767 Toffee #7



ACE-53768 Lichen #8



ACE-53769 Resin #9



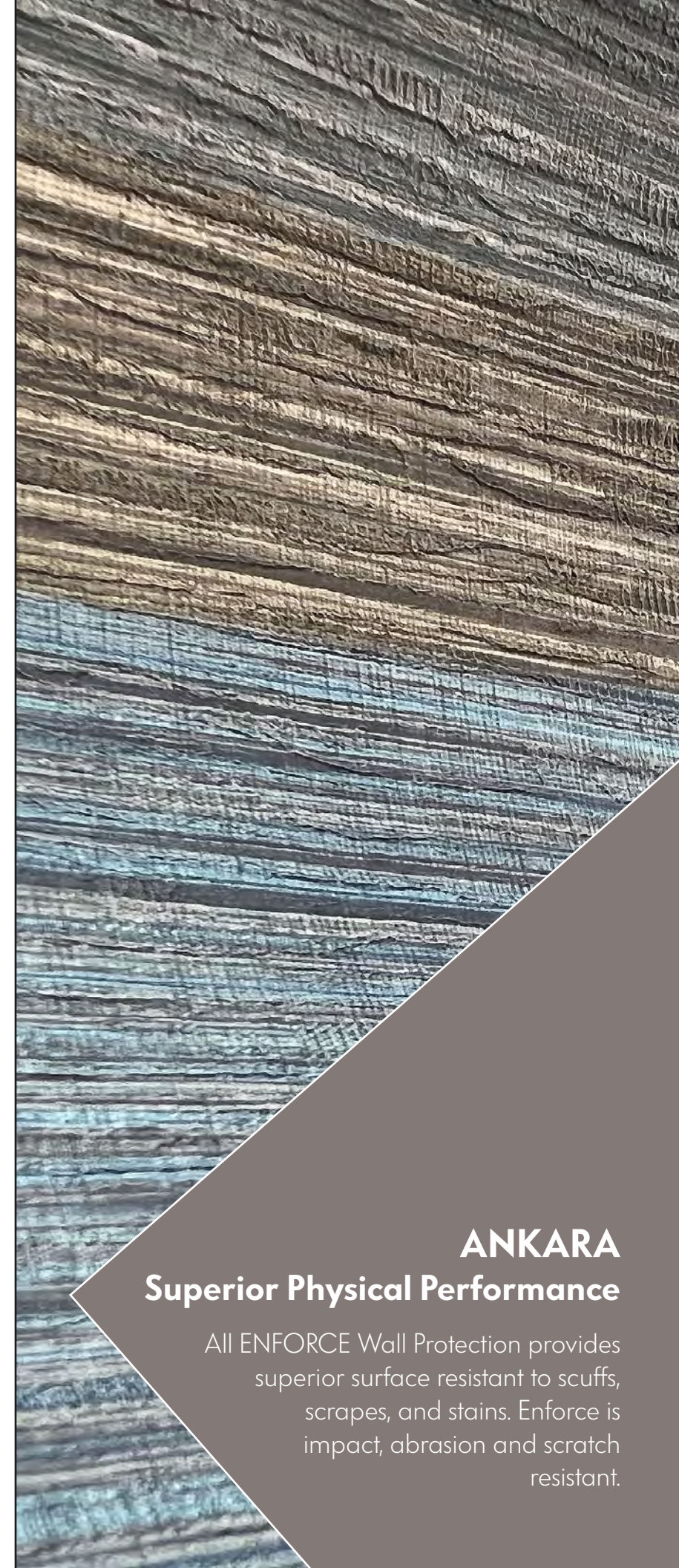
ACE-53770 Carapace #10



ACE-53771 Coyote #11



ACE-53772 Ares #12



ANKARA Superior Physical Performance

All ENFORCE Wall Protection provides superior surface resistant to scuffs, scrapes, and stains. Enforce is impact, abrasion and scratch resistant.



Ease of Installation

All ENFORCE Wall Protection easily turns corners with the use of a heat tool for sharp, crisp edges. No need for trim strips, top caps or corner guards.

Shown: Top / Bottom Ankara



GIBRALTAR

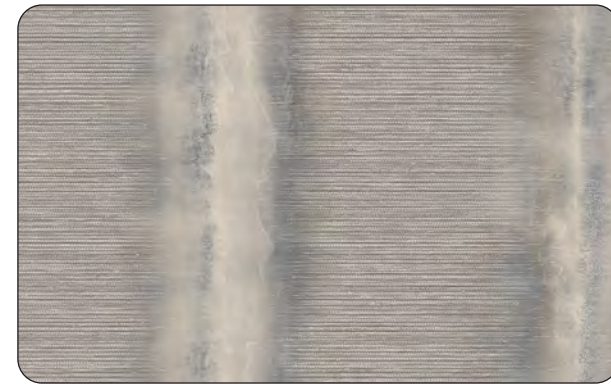
Gibraltar imparts the beauty of a natural cotton or linen, with linear slubs, and infuses the subtlety of a hand painted water color organic vertical with colorful interplay.



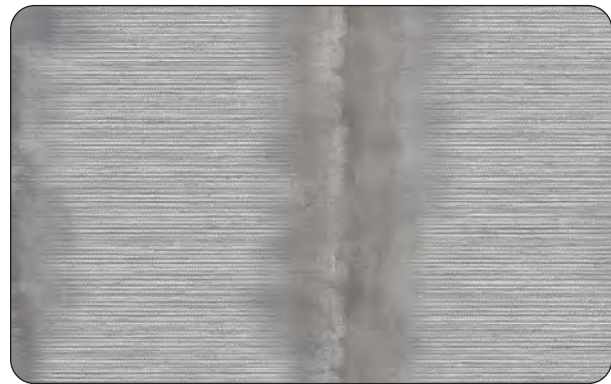
ACE-53741 Contral #1



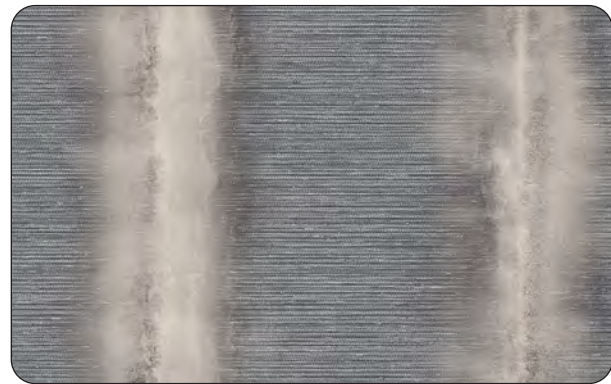
ACE-53742 Morning Star #2



ACE-53743 Vision #3



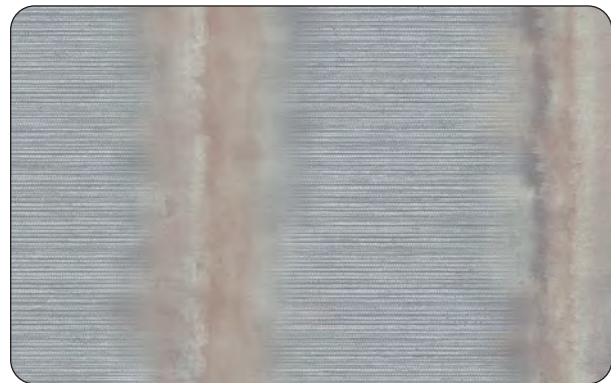
ACE-53744 Crater #4



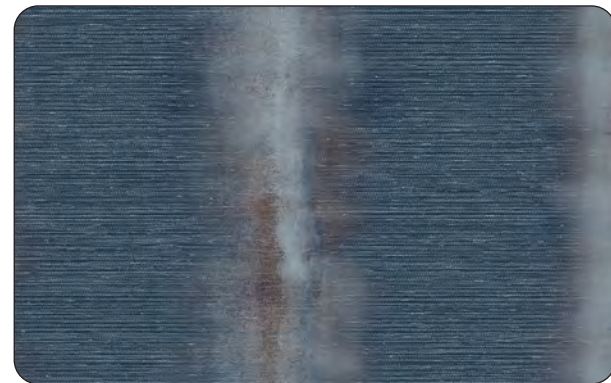
ACE-53745 Specter #5



ACE-53746 Aether #6



ACE-53747 Lagoon #7



ACE-53748 Sapphire #8



ACE-53749 Legacy #9



ACE-53750 Patina #10



GIBRALTAR Durability

ENFORCE Wall Protection is as durable as it is beautiful; Enforce proves durability does not have to look institutional or industrial.



Flexible Wall Protection

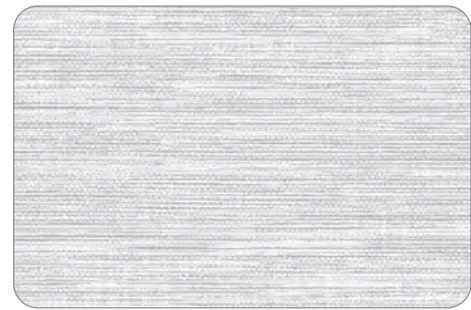
All ENFORCE Wall Protection is rolled goods easily shipped and installed that is appropriate for the stringent demands of healthcare and senior living environments, offering abrasion and stain resistance with cleaning tolerance to most disinfectants.

*Shown: Far and near wall vertical: Gibraltar /
Far and near feature wall: Ankara*



ORSINI

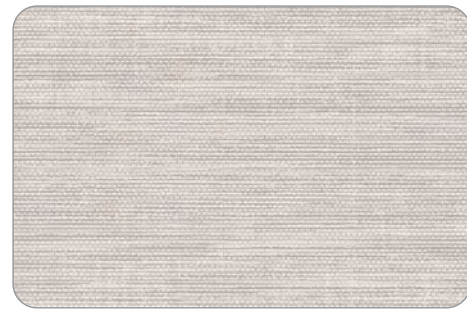
Orsini offers a design and performance solution in a sophisticated and constructed woven rendition of wall protection.



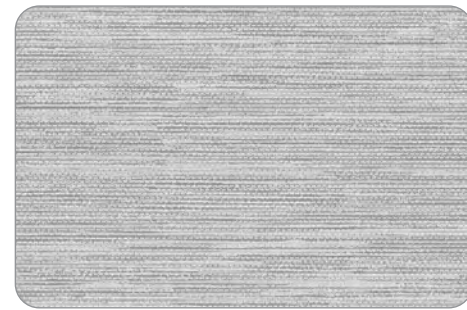
ACE-53801 Cloudstep #1



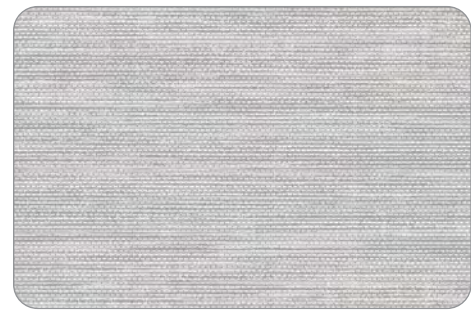
ACE-53802 Halo #2



ACE-53803 Ivory #3



ACE-53804 Vapor Trail #4



ACE-53805 Marble #5



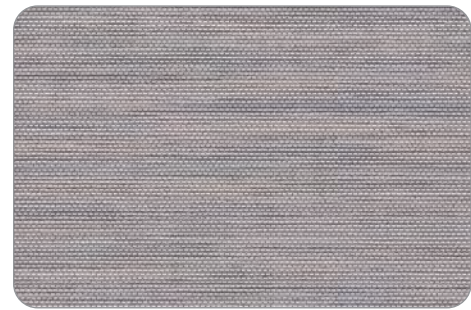
ACE-53806 Wildrye #6



ACE-53807 Tranquil #7



ACE-53808 Clover #8



ACE-53809 Anemone #9



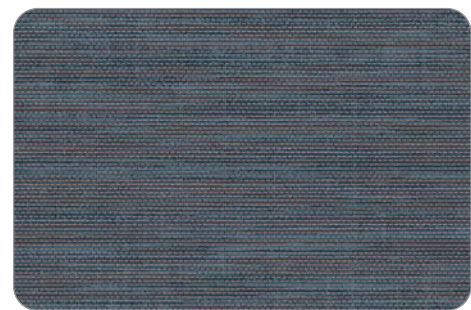
ACE-53810 Inscription #10



ACE-53811 Grotto #11



ACE-53812 Beryl #12



ACE-53813 Riverbed #13



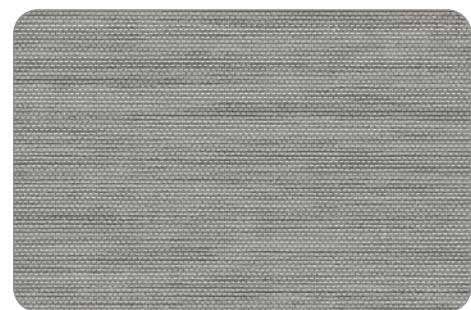
ACE-53814 Pyrite #14



ACE-53815 Etruscan #15



ACE-53816 Monsoon #16



ACE-53817 Requiem #17



ORSINI PVC-Free

All ENFORCE designs, such as Orsini, are 33-ounce heavy weight PVC-Free Olefin Composite flexible wall surfacing material solutions that provide strength, beauty and protection without compromising design aesthetics.



Resistant to Most Cleaning & Disinfecting Agents

All ENFORCE designs are resistant to most cleaning and disinfecting agents. As with any quality product, proper care and maintenance will extend the wall protection life, and maintain its original beauty and finish. ENFORCE should be washed periodically to prevent dirt and grime from accumulating, and to maintain the original beauty.

Refer to our website for a full listing of cleaning agents and disinfectants that are tested and recommended for ENFORCE.

Shown: Near feature wall: Orsini / Far feature wall: Ankara



RUMELI

Rumeli is a rustic, weathered, horizontal aquatic design. Rumeli, as all ENFORCE Wall Protection, can also be installed horizontally for minimal seam exposure.



ACE-53781

Apparition #1



ACE-53782

Seraph #2



ACE-53783

Neapolitan #3



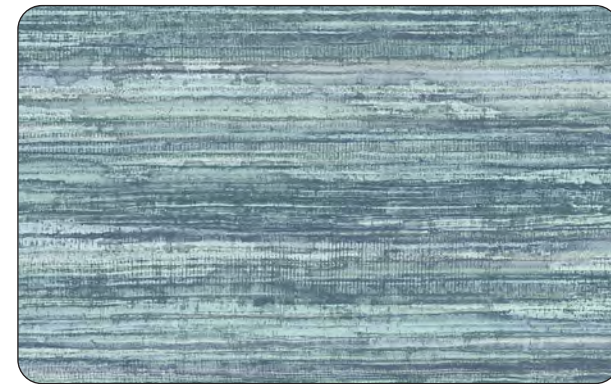
ACE-53784

Titanium #4



ACE-53785

Heirloom #5



ACE-53786

Riptide #6



ACE-53787

Cavern #7



ACE-53788

Fudge #8



ACE-53789

Nautical #9



ACE-53790

Terra #10



RUMELI Cost Effective

ENFORCE Wall Protection is cost effective as it provides specifiers and facilities a superior physical and cleaning performance as compared to standard vinyl wallcovering. Enforce is 54" wide and has Class A Flame and Smoke Performance.



Sustainable

Using evo® technology, a sustainable, PVC-Free Olefin Composite material, ENFORCE is artistically designed, and contains 30% post-industrial recycled content. Enforce is printed with water-based inks, low in VOC's, and supports LEED® v4.1 Criteria.

Shown: Far and near wall horizontal: Rumeli / Far and near feature wall: Alkazar



THE NATIONAL FOREST FOUNDATION

The National Forest Foundation RESTORES ecosystems in the United States through on-the-ground conservation. UNITES American communities to improve our National Forests and Grasslands. SUSTAINS the ability of individuals and communities to serve as stewards of these lands. ENGAGES Americans in the enjoyment and restoration of our treasured landscapes.

The National Forest Foundation (NFF) is efficient, results-focused, committed and capable. National and regional programs create innovative public and private partnerships that improve our public lands and deliver real, meaningful results.

From each roll of Enforce PVC-Free Wall Protection, a portion of the proceeds is donated to the NFF which supports one tree planted.



E N F O R C E

Arc|Com

Upholstery | Wall Surfaces | Privacy Curtains | Drapery | Panel | Digital | Custom