

Steelcase®

Arc|Com



Cadence
AC-64062 Beach #3



Tailored
AC-64092 Sand #3



Insight
AC-63547 Cocoa #28



Transform
AC-64147 Goldenrod #18



Transform
AC-64148 Mineral #19



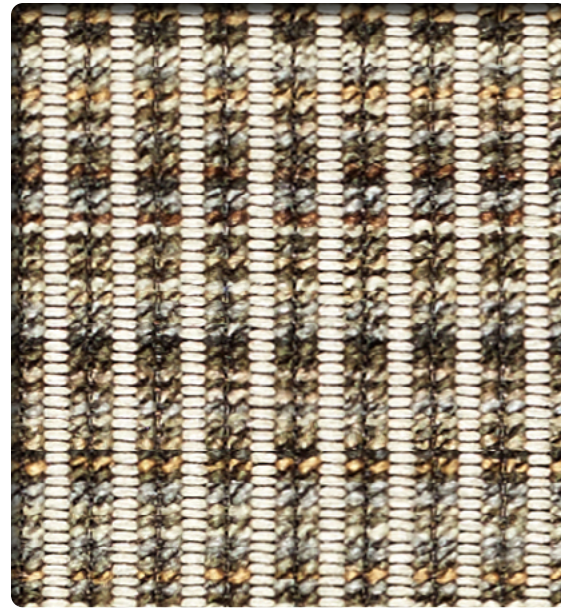
Tailored
AC-64106 Ash #17



Transform
AC-64149 Stone #20



Insight
AC-63553 Pewter #34



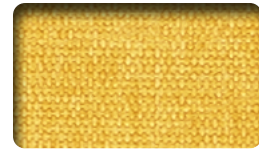
Evolution
AC-63963 Dune #14



Cavo
AC-63200 Fog #1



Talavera
AC-63804 Berry #5



Insight
AC-63523 Sunflower #4



Tailored
AC-64093 Sunflower #4



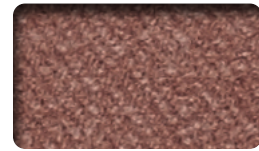
Cadence
AC-64068 Papaya #9



Sync
AC-63073 Garnet #4



Transform
AC-64136 Chili Pepper #7



Transform
AC-64138 Blossom #9



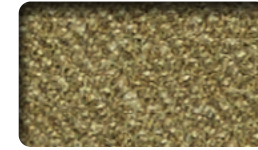
Transform
AC-64137 Berry #8



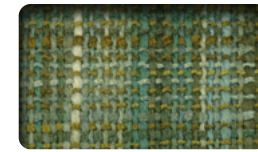
Insight
AC-63530 Plum #11



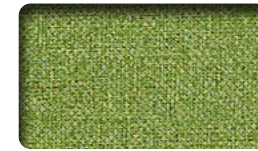
Insight
AC-63522 Citrine #3



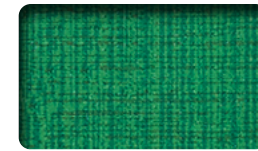
Transform
AC-64139 Kiwi #10



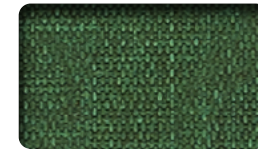
Apollo
AC-63359 Grass #10



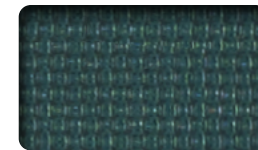
Cadence
AC-64073 Kiwi #14



Engrave
AC-64024 Emerald #15



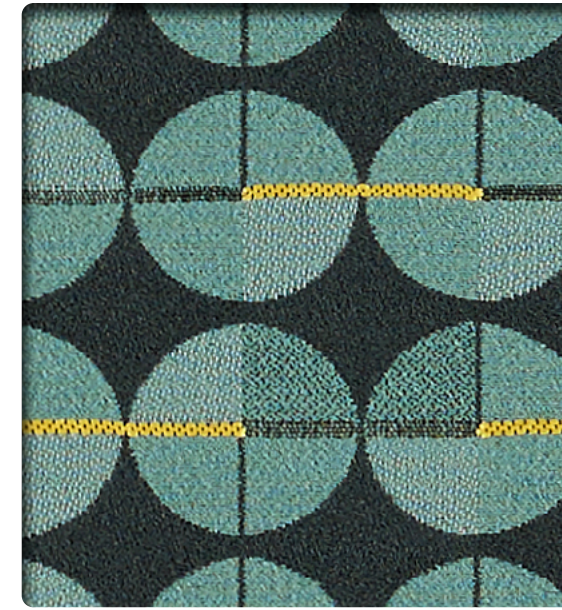
Insight
AC-63520 Emerald #1



Tailored
AC-64098 Mallard #9



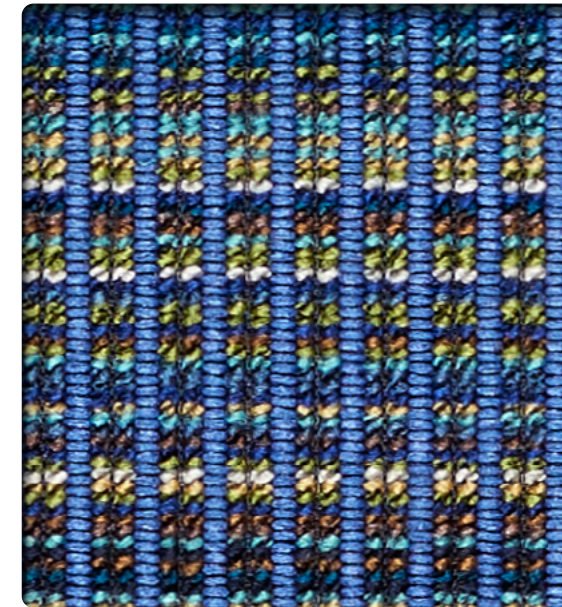
Transform
AC-64141 Mallard #12



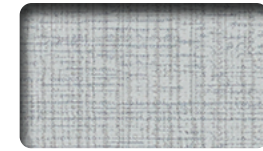
Tick-Tock
AC-63795 Mint #6



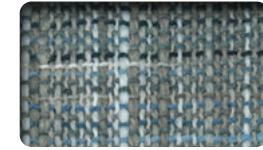
Traverse
AC-63440 Caribbean #1



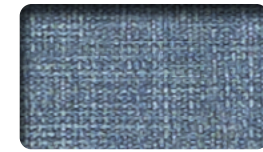
Evolution
AC-63957 Caribbean #8



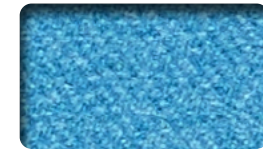
Engrave
AC-64017 Smoke #8



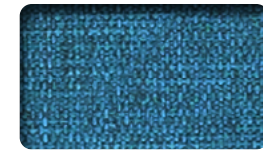
Apollo
AC-63355 Ice Blue #6



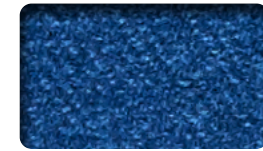
Insight
AC-63542 Storm #23



Transform
AC-64142 Turquoise #13



Insight
AC-63536 Aqua #17



Transform
AC-64143 Caribbean #14



Insight
AC-63534 Blueberry #15



Transform
AC-64145 Midnight #16

TECHNICAL INFORMATION

54" Pattern	Approx. Repeat	Fiber Content & Finish	Abrasion (Wyzenbeek*)	Lightfastness (AATCC Method 16)	Cleaning Code
APOLLO	V-none H-none	100% Polyester CRYPTON®	150,000 D.R.	40 hours	WS/BC
CADENCE	V-none H-none	98% Polyurethane, 2% Silicone Face, 100% Polyester Back WriteOut® Ink Resistant	200,000 D.R.	200 hours	WS/BC
CAVO	V-none H-none	66% Polyacrylic, 34% Polyester Stain Resistant, Acrylic Backing	55,000 D.R.	40 hours	WS/BC
ENGRAVE®	V-none H-none	95% Polyurethane, 5% Silicone Face, 100% Polyester Back WriteOut® Ink Resistant	300,000 D.R.	200 hours	WS/BC
EVOLUTION®	V-11 1/2" H-1/4"	63% Polyester, 37% Acrylic Stain Resistant, Acrylic Backing	125,000 D.R.	40 hours	WS/BC
INSIGHT	V-none H-none	100% Phthalate Free Vinyl Face, 100% Polyester Back Stain Resistant	300,000 D.R.	200 hours	WS/BC
SYNC	V-none H-none	98% Sunbrella Solution-Dyed Acrylic, 2% Polyester Stain Resistant, Acrylic Backing	100,000 D.R.	2,000 hours	WS/BC
TAILORED	V-none H-none	95% Polyurethane, 5% Silicone Face, 100% Polyester Back WriteOut® Ink Resistant	300,000 D.R.	200 hours	WS/BC
TALAVERA®	V-17 1/2" H-14"	85% Polyester, 15% Acrylic Stain Resistant, Acrylic Backing	125,000 D.R.	40 hours	WS/BC
TICK-TOCK®	V-2 1/2" H-5"	80% PCR Polyester, 16% Solution-Dyed Nylon, 4% Polyester Stain Resistant, Acrylic Backing	145,000 D.R.	40 hours	WS/BC
TRANSFORM	V-none H-none	100% Polyester Stain Resistant, Acrylic Backing	100,000 D.R.	60 hours	WS/BC
TRAVERSE®	V-9 3/4" H-5"	56% PCR Polyester, 23% Polyester, 21% Solution-Dyed Nylon CRYPTON®	150,000 D.R.	40 hours	WS/BC

Cleaning Codes:

WS - Water based cleaning agents or foam may be used.
 BC - May be cleaned with bleach following the proper ratio of water and bleach.
 Cleaning by a professional service is recommended.

This card represents only a select sampling of the Arc|Com fabrics available. For the complete selection of patterns and colorways and/or samples of our specific fabrics visit our website at arc-com.com or contact Arc|Com.

See Arc|Com Textile samples for specific technical data.



*Multiple factors affect fabric durability and appearance retention, including end-user application and proper maintenance. Wyzenbeek results above 100,000 double rubs have not been shown to be an indicator of increased lifespan.

Steelcase®

901 44th St. SE Grand Rapids, MI
steelcase.com
 (800) 342-8562

To reorder, contact your local sales office or your dealer.

Item #20-0000578 12/20 ©2020 Steelcase Inc.
 All rights reserved. Steelcase is a registered trademark of Steelcase Inc.
 Printed in U.S.A.

Arc|Com

arc-com.com
 800 223 5466